



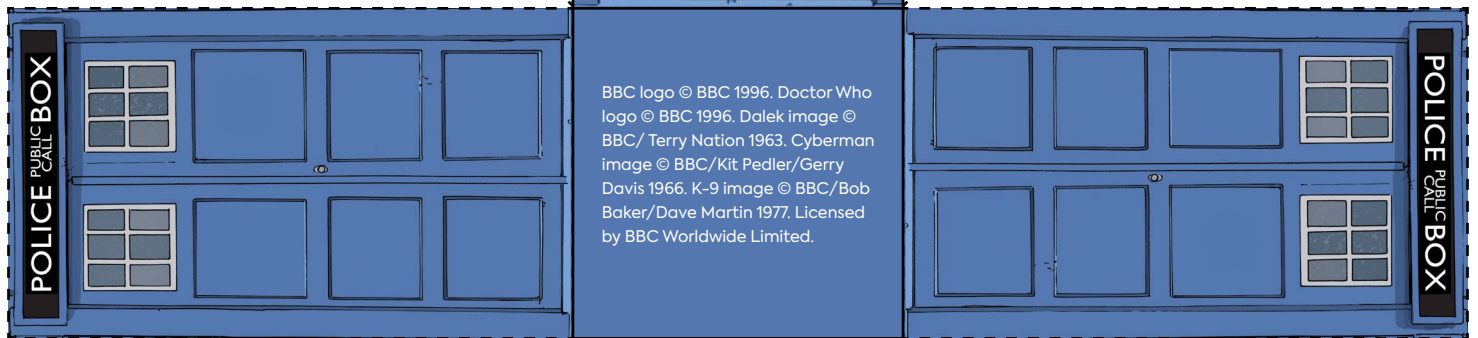
Artwork by: Jeff Carlisle



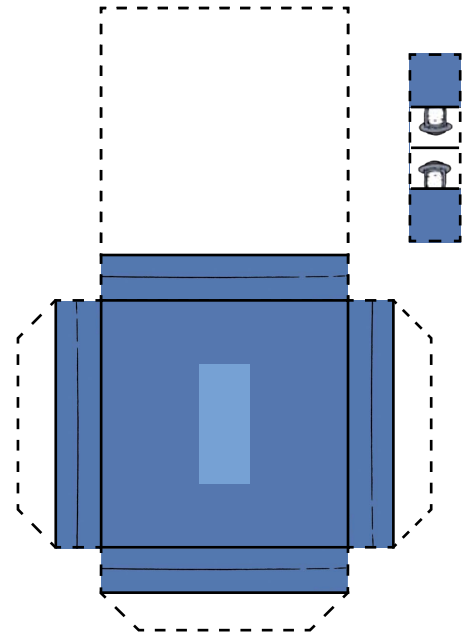
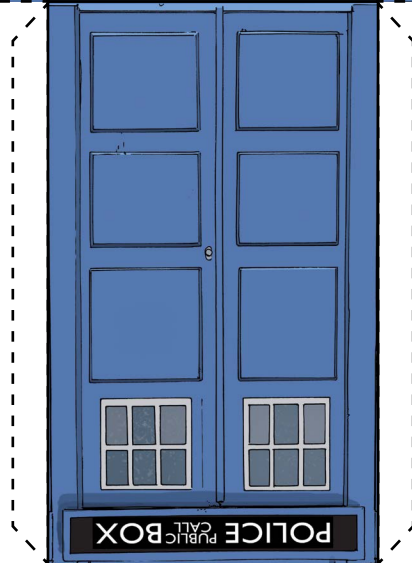
MAKE YOUR OWN TARDIS

INSTRUCTIONS:

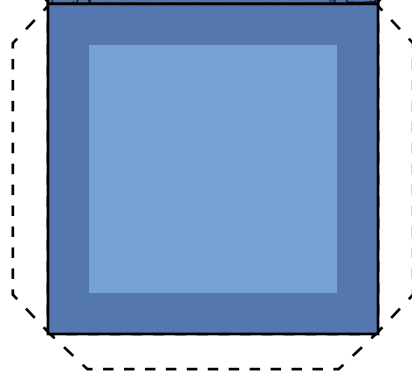
1. Carefully cut along the dotted lines
2. Fold along the solid black lines
3. Using glue attach the tabs to create the two boxes.
4. Glue the slim box on the center of the top of the TARDIS.
5. Fold the light piece in half, then glue the splayed tabs onto the top. It should look like the mock up on the sheet.
6. Carefully cut out your Doctors and fold their stands.



Artwork by: Elena Casagrande and Arianna Florean



Artwork by: Neil Edwards



Artwork by: Neil Edwards and Ivan Nunes

