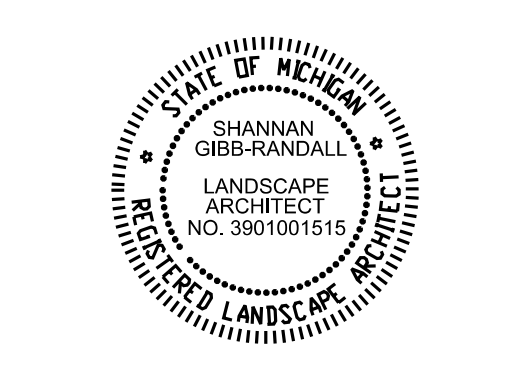


LEGEND

	Property boundary
	Strip lawn/planting beds and remove and dispose of all vegetation
	Strip lawn BY HAND in critical root zone to protect tree
	Existing concrete
	Existing Pathway
	Existing Ecoraster Pathway
	Existing contours
	Landmark Tree Critical Root Zone
	Construction/tree protection fence
	Inlet Filter (See D-1 Detail 2)
	Tree/shrub to be removed
Contact CONSULTANT for any discrepancies between plans and the physical conditions of the site	

INSITE
InSite Design Studio, Inc.
 412 Longshore Drive
 Ann Arbor, Michigan
 48105
 Phone: 734.995.4194
 Fax: 734.668.2525



Project:
**Plymouth District Library:
 Planting Improvements**

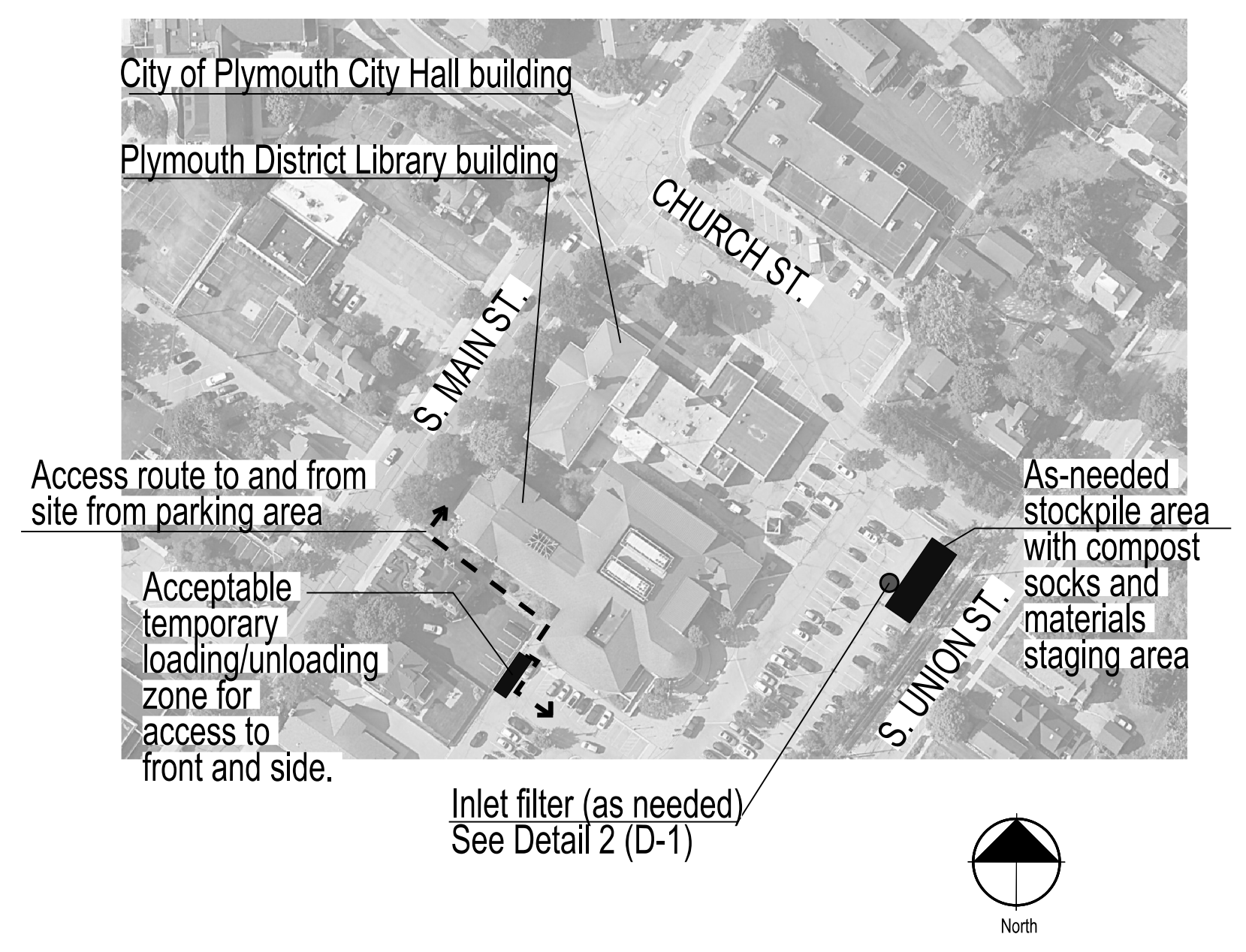
Date: 06/13/2024
 Issued for: Bidding

Scale: 1" = 20'
 Drawn by: KT & SD

GENERAL NOTES

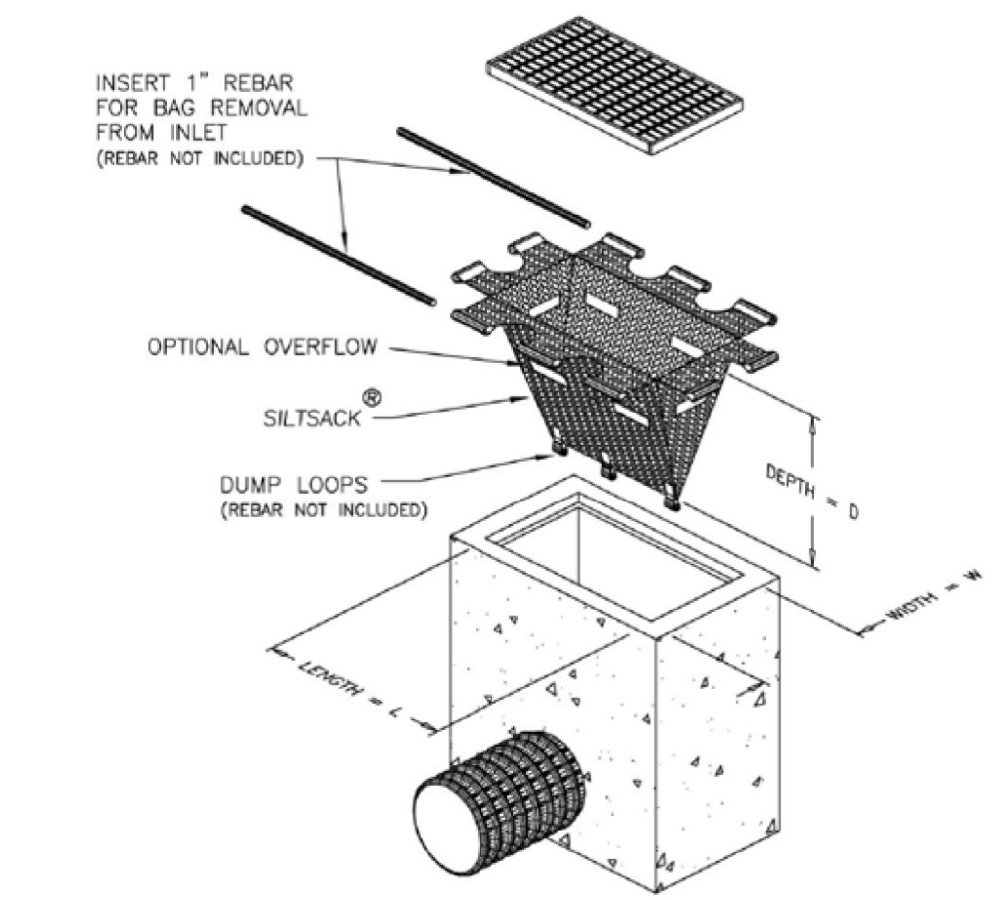
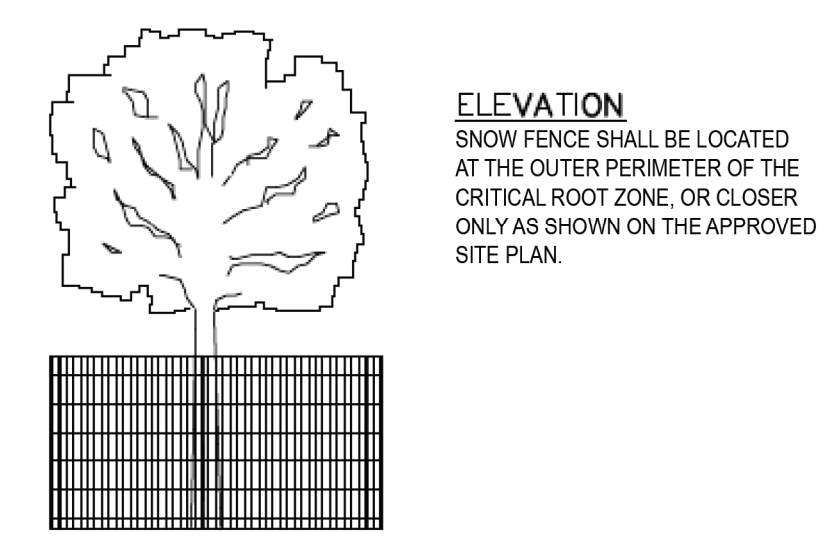
1. A survey was only created for a portion of the front off of Main St. The rest of the site does not have a professional survey. If any questions should come up concerning discrepancies between the plans and physical conditions of the site, CONTRACTOR shall contact CONSULTANT before proceeding with work.
2. Extra care should be taken in unsurveyed areas to avoid damaging any subsurface utilities including but not limited to irrigation and electrical lines.
3. Contractor to obtain any necessary permits prior to construction.
4. Contractor to follow designated route onto site as drawn in D-1 IMAGE 01 - Aerial.

IMAGE 01 - AERIAL - NOT TO SCALE



Title:
**Site Preparation and
 Demo Plan**

Sheet:
D-1



1 Construction/Tree Protection Fence
 NOT TO SCALE

2 Inlet Filter (over catch basin)
 NOT TO SCALE

CONTRACTOR is responsible to field verify location of all underground utilities prior to any work.

NOTES

- All planting beds to be mulched.
- No survey was used to create the following planting plan. If any questions should come up concerning discrepancies between the plans and physical conditions of the site, CONTRACTOR shall contact CONSULTANT before proceeding with work.
- Bench is a Victor Stanley C-10 6' Length with Wood Slats. Color option: Black. Material: Wood.
- CONTRACTOR shall move existing sculpture of girl reading to location specified on plans.

PLANT SCHEDULE

TREES AND SHRUBS						
Key	Qty	Botanical Name	Common Name	Size	Spacing	Notes
CF	1	<i>Cornus florida</i>	Flowering Dogwood	2" cal	as shown	
CVWK	1	<i>Crataegus viridis 'Winter King'</i>	Winter King Hawthorn	2" cal	as shown	
RC	9	<i>Rhus copallinum var. latifolia</i>	Flame Flame Shining Sumac	#3 cont.	as shown	

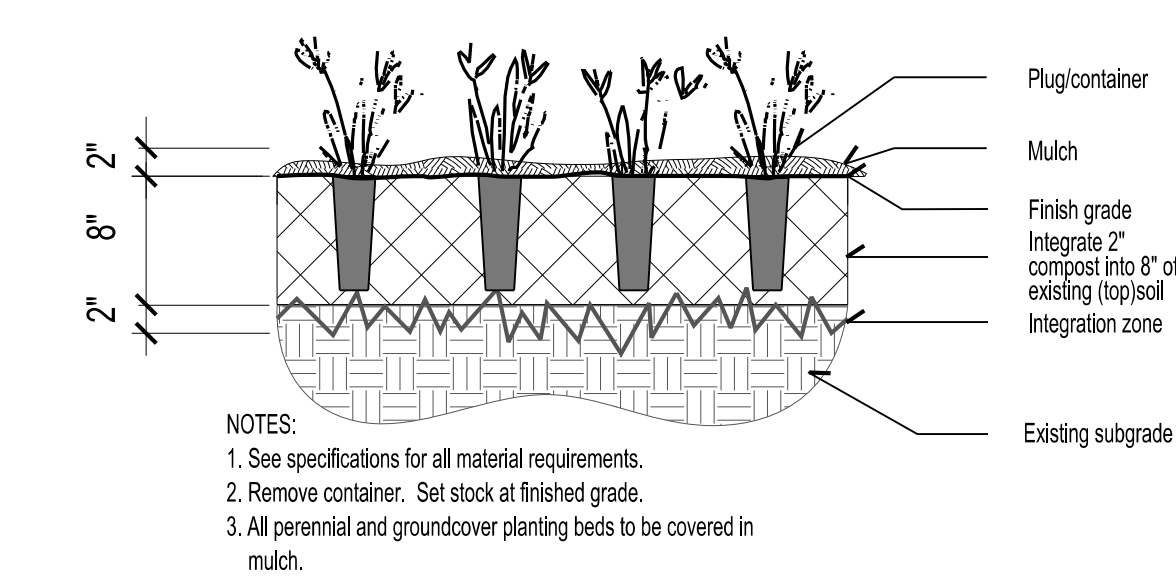
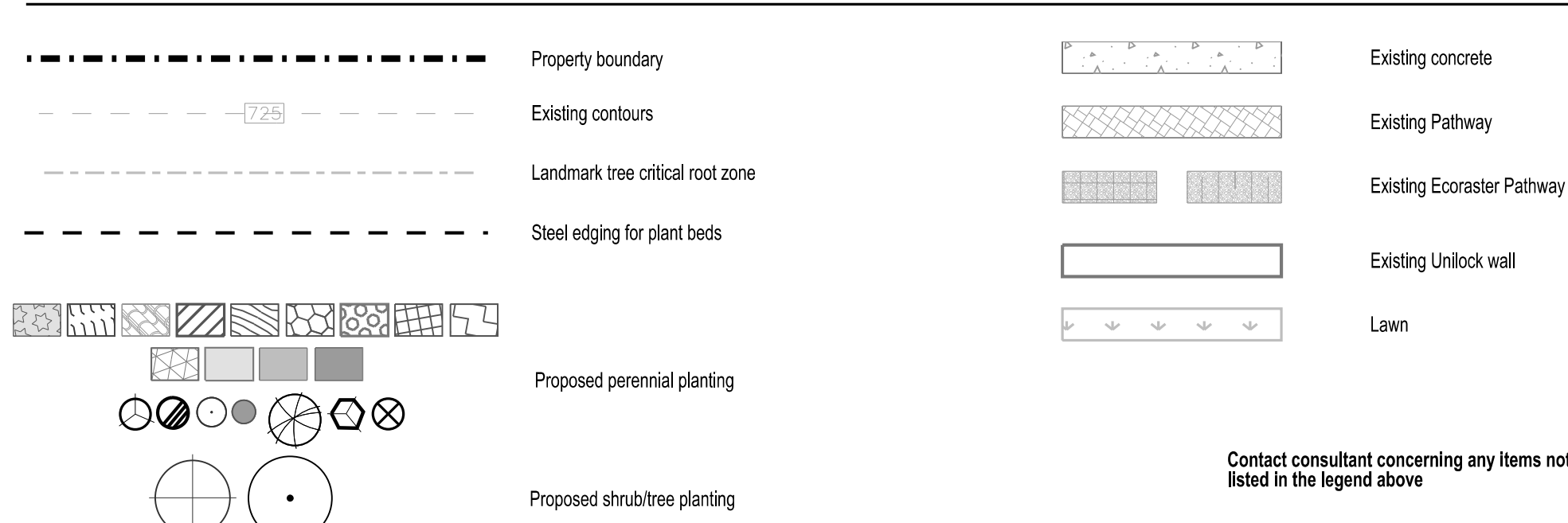
PERENNIAL PLANT MIXES						
MIX 1						
Key	Qty	Botanical Name	Common Name	Size	Spacing	Planting Instructions
gm	223	<i>Geranium maculatum</i>	Wild Geranium	plug	12" O.C.	Stage last, filling remaining area in event
ph	224	<i>Penstemon hartwegii</i>	Hairy Beardtongue	plug	12" O.C.	Stage last in groups of 3-5
MIX 2						
Key	Qty	Botanical Name	Common Name	Size	Spacing	Planting Instructions
ca	45	<i>Achillea millefolium</i>	Black Cow-wal	plug	30" O.C.	Stage second, filling area in event
cp	161	<i>Carex pennsylvanica</i>	Pennsylvania Sedge	plug	18" O.C.	Stage last, filling remaining area in event
tabs	90	<i>Thalictrum aquilegifolium 'Black Stockings'</i>	Early Meadow Rue 'Black Stockings'	1 gal.	24" O.C.	Stage second in groups of 3-5
MIX 3						
Key	Qty	Botanical Name	Common Name	Size	Spacing	Planting Instructions
oco	34	<i>Conoclinium coelestinum</i>	Blue Mistflower	plug	18" O.C.	Stage area evenly with 'bd'
cp	64	<i>Carex pennsylvanica</i>	Pennsylvania Sedge	plug	18" O.C.	Stage last, filling remaining area in event
pd	34	<i>Phlox divaricata</i>	Woodland Phlox	plug	18" O.C.	Stage area evenly with 'too'
MIX 4						
Key	Qty	Botanical Name	Common Name	Size	Spacing	Planting Instructions
dog	60	<i>Deschampsia cespitosa 'Goldtau'</i>	Gold Dew Tufted Haregrass	1 gal.	24" O.C.	
MIX 5						
Key	Qty	Botanical Name	Common Name	Size	Spacing	Planting Instructions
epv	64	<i>Echinacea purpurea 'Virgin'</i>	Virgin Coneflower	1 gal.	18" O.C.	Stage area evenly with 'sh'
sh	64	<i>Sporobolus heterolepis</i>	Prairie Dropseed	plug	18" O.C.	Stage area evenly with 'tpr'
MIX 6						
Key	Qty	Botanical Name	Common Name	Size	Spacing	Planting Instructions
abl	37	<i>Agastache 'Blue Fortune'</i>	Anise Hyssop 'Blue Fortune'	1 gal.	18" O.C.	Stage second in groups of 3-5
dog	41	<i>Deschampsia cespitosa 'Goldtau'</i>	Gold Dew Tufted Haregrass	1 gal.	24" O.C.	Stage last, filling remaining area in event
ssso	37	<i>Schizachyrium scoparium 'Standing Ovation'</i>	Standing Ovation Life Bluesalem	1 gal.	18" O.C.	Stage first in groups of 3-5
MIX 7						
Key	Qty	Botanical Name	Common Name	Size	Spacing	Planting Instructions
dog	23	<i>Deschampsia cespitosa 'Goldtau'</i>	Gold Dew Tufted Haregrass	1 gal.	24" O.C.	Stage last, filling remaining area in event
gm	43	<i>Penstemon hartwegii</i>	Hairy Beardtongue	plug	12" O.C.	Stage first in groups of 3-5
ph	43	<i>Geranium maculatum</i>	Wild Geranium	plug	12" O.C.	Stage second in groups of 3-5
MIX 8						
Key	Qty	Botanical Name	Common Name	Size	Spacing	Planting Instructions
cp	96	<i>Carex pennsylvanica</i>	Pennsylvania Sedge	plug	18" O.C.	Stage last, filling remaining area in event
gt	34	<i>Galeria trifoliata</i>	Bowman's Root	1 gal.	30" O.C.	Stage last in groups of 3-5
MIX 9						
Key	Qty	Botanical Name	Common Name	Size	Spacing	Planting Instructions
cp	166	<i>Carex pennsylvanica</i>	Pennsylvania Sedge	plug	18" O.C.	Stage last, filling remaining area in event
hd	64	<i>Helianthus divaricatus</i>	Woodland Sunflower	plug	30" O.C.	Stage last in groups of 3-5
MIX 10						
Key	Qty	Botanical Name	Common Name	Size	Spacing	Planting Instructions
cp	93	<i>Carex pennsylvanica</i>	Pennsylvania Sedge	plug	18" O.C.	Stage last, filling remaining area in event
erc	93	<i>Eupatorium rugosum 'Chocolate'</i>	Chocolate Boneset	1 gal.	18" O.C.	Stage last in groups of 3-5
MIX 11						
Key	Qty	Botanical Name	Common Name	Size	Spacing	Planting Instructions
dog	40	<i>Deschampsia cespitosa 'Goldtau'</i>	Gold Dew Tufted Haregrass	1 gal.	24" O.C.	Stage last, filling remaining area in event
epv	68	<i>Echinacea purpurea 'Virgin'</i>	Virgin Coneflower	1 gal.	18" O.C.	Stage first in groups of 3-5
MIX 12						
Key	Qty	Botanical Name	Common Name	Size	Spacing	Planting Instructions
abi	31	<i>Amorpha 'Blue Ice Blue Star'</i>	Blue Star	1 gal.	18" O.C.	Stage last, filling remaining area in event
srf	11	<i>Solidago rugosa 'Fireworks'</i>	Fireworks Goldenrod	1 gal.	30" O.C.	Stage last, evenly distributed across area
MIX 13						
Key	Qty	Botanical Name	Common Name	Size	Spacing	Planting Instructions
abl	11	<i>Agastache 'Blue Fortune'</i>	Anise Hyssop 'Blue Fortune'	1 gal.	18" O.C.	Stage second in groups of 3-5
ssso	11	<i>Schizachyrium scoparium 'Standing Ovation'</i>	Standing Ovation Life Bluesalem	1 gal.	18" O.C.	Stage first in groups of 3-5

PERENNIAL PLANTS						
Key	Qty	Botanical Name	Common Name	Size	Spacing	Planting Instructions
abl	20	<i>Agastache 'Blue Fortune'</i>	Anise Hyssop 'Blue Fortune'	1 gal.	18" O.C.	
abi	86	<i>Amorpha 'Blue Ice Blue Star'</i>	Blue Star	1 gal.	18" O.C.	
ac	35	<i>Astragalus canadensis</i>	Canada Milkweeth	plug	18" O.C.	
ae	35	<i>Asclepias exaltata</i>	Pole Milkweed	plug	as shown	Stage last, as shown
ah	51	<i>Amorpha rubricata</i>	Hutchins Bluester	1 gal.	24" O.C.	
ao	57	<i>Symphoricarpos oblongifolius</i>	Aster October Skies	1 gal.	24" O.C.	
ca	99	<i>Campanula americana</i>	Tall Bellflower	plug	as shown	Stage last, as shown
lak	60	<i>Liatris spicata 'Koolhaas'</i>	Koolhaas' Blazing Star	1 gal.	as shown	Stage last, as shown
pvs	40	<i>Panicum virgatum 'Shenandoah'</i>	Shenandoah Switchgrass	1 gal.	as shown	
srf	24	<i>Solidago rugosa 'Fireworks'</i>	Fireworks Goldenrod	1 gal.	30" O.C.	
st	38	<i>Siphium teresbinthaceum</i>	Prairie Dock	plug	as shown	Stage last, as shown
ssso	5	<i>Schizachyrium scoparium 'Standing Ovation'</i>	Standing Ovation Life Bluesalem	1 gal.	as shown	

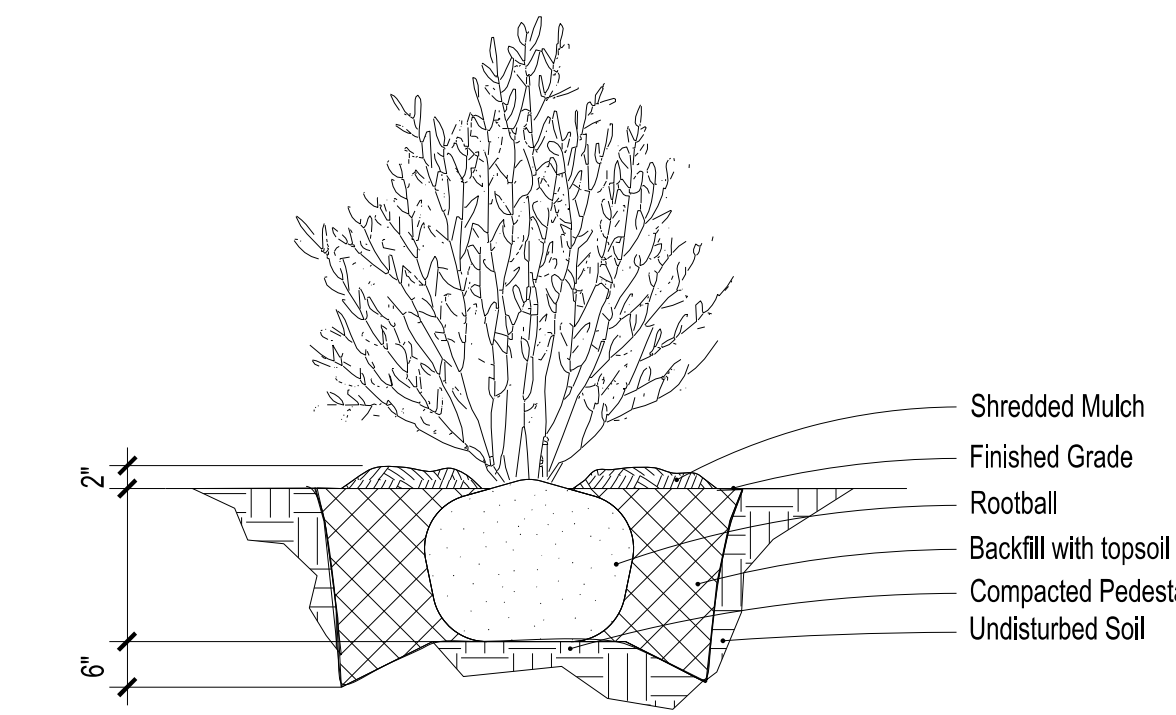
PLANT LIST

Key	Qty	Botanical Name	Common Name	Size	Spacing	Planting Instructions
abl	20	<i>Agastache 'Blue Fortune'</i>	Anise Hyssop 'Blue Fortune'	1 gal.	18" O.C.	
abi	86	<i>Amorpha 'Blue Ice Blue Star'</i>	Blue Star	1 gal.	18" O.C.	
ac	35	<i>Astragalus canadensis</i>	Canada Milkweeth	plug	18" O.C.	
ae	35	<i>Asclepias exaltata</i>	Pole Milkweed	plug	as shown	Stage last, as shown
ah	51	<i>Amorpha rubricata</i>	Hutchins Bluester	1 gal.	24" O.C.	
ao	57	<i>Symphoricarpos oblongifolius</i>	Aster October Skies	1 gal.	24" O.C.	
ca	99	<i>Campanula americana</i>	Tall Bellflower	plug	as shown	Stage last, as shown
lak	60	<i>Liatris spicata 'Koolhaas'</i>	Koolhaas' Blazing Star	1 gal.	as shown	Stage last, as shown
pvs	40	<i>Panicum virgatum 'Shenandoah'</i>	Shenandoah Switchgrass	1 gal.	as shown	
srf	24	<i>Solidago rugosa 'Fireworks'</i>	Fireworks Goldenrod	1 gal.	30" O.C.	
st	38	<i>Siphium teresbinthaceum</i>	Prairie Dock	plug	as shown	Stage last, as shown
ssso	5	<i>Schizachyrium scoparium 'Standing Ovation'</i>	Standing Ovation Life Bluesalem	1 gal.	as shown	

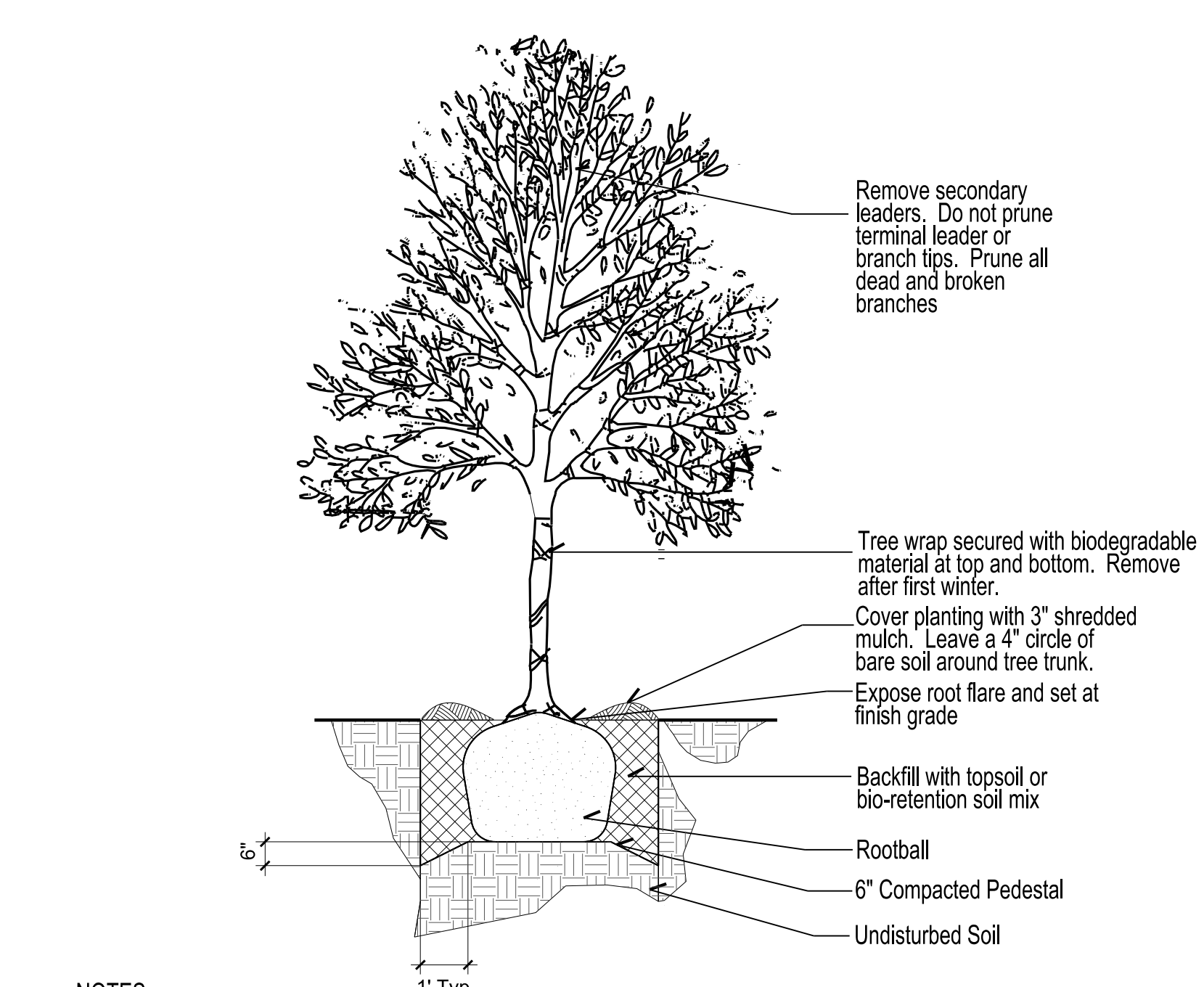
LEGEND



1 Perennial & Vine Planting
NOT TO SCALE

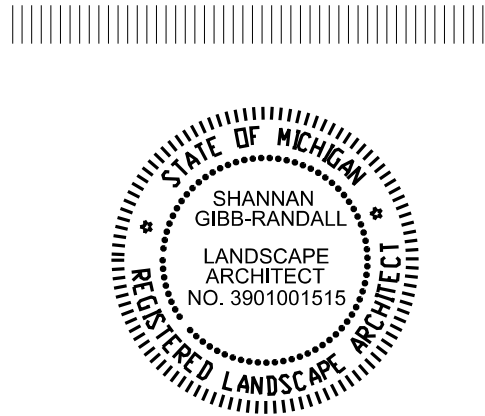
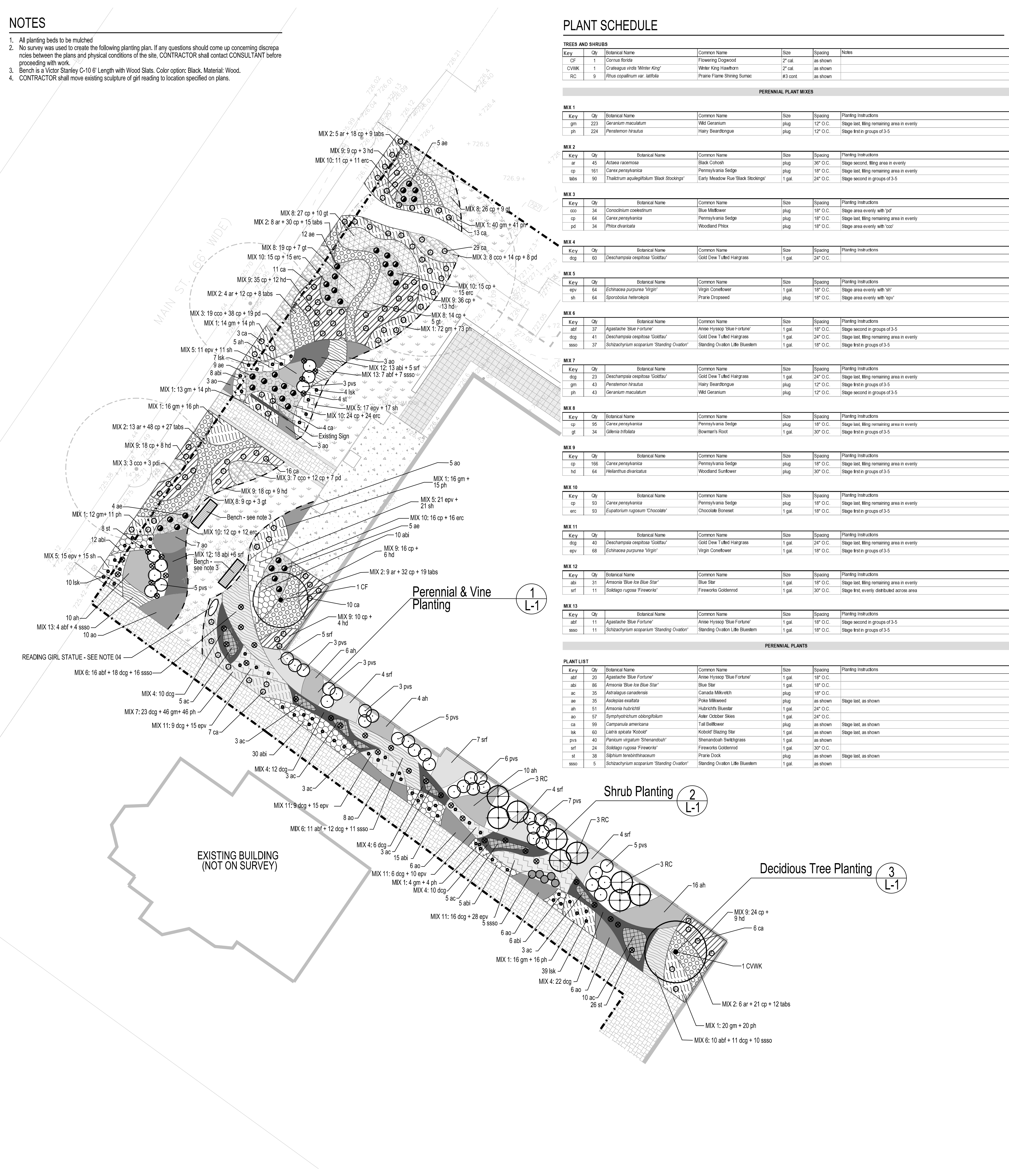


2 Shrub Planting
NOT TO SCALE



- NOTES:
 1. See specifications for all material requirements.
 2. Taper planting hole 45" up from bottom of hole.
 3. Set rootball plumb on 95% compacted soil pedestal so base of exposed root flare is at finish grade.
 4. Remove top one half of binding and burlap. Cut top half of wires of basket and remove from site.
 5. Gently remove soil from top of rootball to expose tree root flare if not visible. Set base of root flare at finish grade.
 6. Remove all tags, strings, plastics, and any other materials which are unsightly or could cause girdling.
 7. Remove all non-biodegradable materials from the rootball.

3 Deciduous Tree Planting
NOT TO SCALE



Project:
**Plymouth District Library:
 Planting Improvements**

Date: 06/13/2024 Issued for: Bidding

Scale: 1" = 10'-0"
 Drawn by: KT & SD

Title:
**Planting Plan - Main
 St. and Side Planting**

Sheet:
L-1

NOTES

1. All planting beds to be mulched
2. No survey was used to create the following planting plan. If any questions should come up concerning discrepancies between the plans and the physical conditions of the site, CONTRACTOR shall contact CONSULTANT before proceeding with work.

LEGEND

Proposed perennial planting

Proposed shrub/tree planting

Existing concrete

Existing Pavers

Contact consultant concerning any items not listed in the legend above



PLANT SCHEDULE

TREES AND SHRUBS

Key	Qty	Botanical Name	Common Name	Size	Spacing	Notes
CVWK	3	<i>Crataegus arida</i> 'Winter King'	Winter King Hawthorn	2' cal.	as shown	
RAGL	31	<i>Rhus aromatica</i> 'Dro-Low'	Dro-Low Fragrant Sumac	#3 cont.	42" O.C.	

PERENNIAL PLANT MIXES

MIX	Key	Qty	Botanical Name	Common Name	Size	Spacing	Planting Instructions
MIX 1	ba	8	<i>Baptisia australis</i>	False Blue Indigo	1 gal.	40" O.C.	Stage first in groups of 3-5
	gm	32	<i>Geranium maculatum</i>	Wild Geranium	plug	12" O.C.	Stage last, fill remaining area in evenly

MIX	Key	Qty	Botanical Name	Common Name	Size	Spacing	Planting Instructions
MIX 2	ar	29	<i>Asplenium platyneuron</i>	Asplenium	1 gal.	24" O.C.	Stage area evenly with 1st
	m	165	<i>Ruellia humilis</i>	Wild Petunia	plug	12" O.C.	Stage area evenly with 1st

MIX	Key	Qty	Botanical Name	Common Name	Size	Spacing	Planting Instructions
MIX 3	epv	29	<i>Echinacea purpurea</i> 'Virgin'	Virgin Coneflower	1 gal.	18" O.C.	Stage area evenly with 1st
	sh	29	<i>Sporobolus heterolepis</i>	Prarie Dropseed	plug	18" O.C.	Stage area evenly with 1st

MIX	Key	Qty	Botanical Name	Common Name	Size	Spacing	Planting Instructions
MIX 4	cp	103	<i>Carex pensylvanica</i>	Pennsylvania Sedge	plug	18" O.C.	Stage last, fill remaining area in evenly
	erc	50	<i>Eupatorium rugosum</i> 'Chocolate'	Chocolate Boneset	plug	18" O.C.	Stage second in groups of 3-5
	tbe	51	<i>Thalictrum aquilegifolium</i> 'Black Stockings'	Early Meadow Rue 'Black Stockings'	plug	18" O.C.	Stage first in groups of 3-5

MIX	Key	Qty	Botanical Name	Common Name	Size	Spacing	Planting Instructions
MIX 5	gt	6	<i>Geum triflorum</i>	Prarie Smoke	plug	12" O.C.	Stage in groups of 3
	jpn	3	<i>Juniperus procumbens</i> 'Nana'	Garden Juniper	1 gal.	as shown	Stage as shown
	seef	3	<i>Symphoricarpos</i> 'Snow Flurry'	White Heath Aster	1 gal.	24" O.C.	Stage in groups of 3

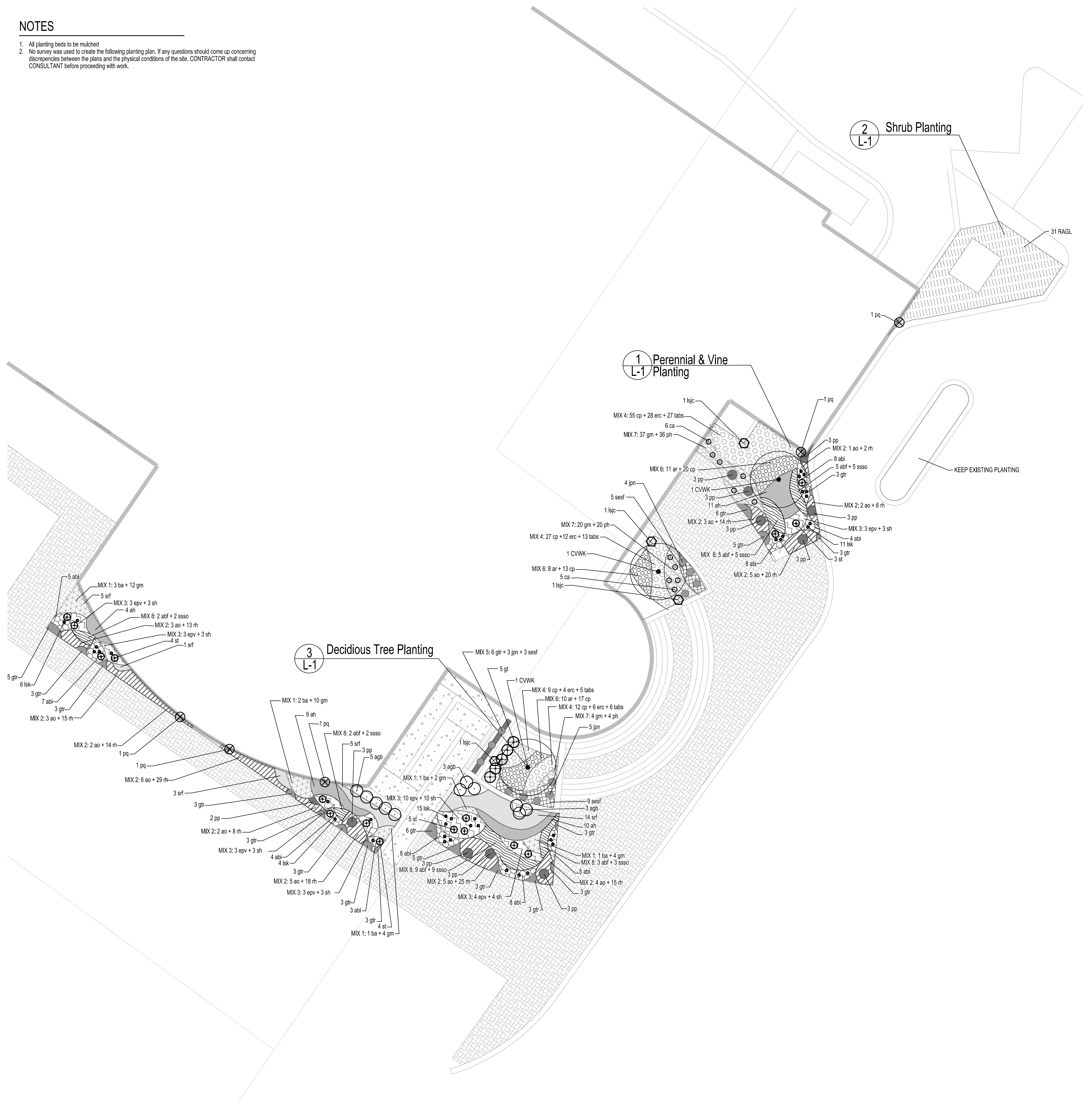
MIX	Key	Qty	Botanical Name	Common Name	Size	Spacing	Planting Instructions
MIX 6	ar	29	<i>Asplenium platyneuron</i>	Asplenium	1 gal.	24" O.C.	Stage area evenly with 1st
	cp	50	<i>Carex pensylvanica</i>	Pennsylvania Sedge	plug	18" O.C.	Stage area evenly with 1st

MIX	Key	Qty	Botanical Name	Common Name	Size	Spacing	Planting Instructions
MIX 7	gm	64	<i>Geranium maculatum</i>	Wild Geranium	plug	12" O.C.	Stage last, fill remaining area in evenly
	ph	63	<i>Penstemon tripartitus</i>	Hairy Beardtongue	plug	12" O.C.	Stage first in groups of 3-5

MIX	Key	Qty	Botanical Name	Common Name	Size	Spacing	Planting Instructions
MIX 8	abf	26	<i>Agastache 'Blue Fortune'</i>	Anise Hyssop 'Blue Fortune'	1 gal.	18" O.C.	Stage last, fill remaining area in evenly
	ssso	26	<i>Schizanthus scapanium</i> 'Standing Ovator'	Standing Ovator Life Bluestem	1 gal.	18" O.C.	Stage first in groups of 3-5

PERENNIAL PLANTS & VINES

Key	Qty	Botanical Name	Common Name	Size	Spacing	Planting Instructions
ab	60	<i>Amonia 'Blue Ice Blue Star'</i>	Blue Star	1 gal.	18" O.C.	
agb	11	<i>Andropogon gerardi</i> 'Blackhawk'	Blackhawk Big Bluestem	1 gal.	as shown	
ah	34	<i>Amonia nuttallii</i>	Hubbard's Blueaster	1 gal.	24" O.C.	
ca	11	<i>Campanula americana</i>	Tall Bellflower	plug	as shown	Stage last, as shown
gt	66	<i>Geum triflorum</i>	Prarie Smoke	plug	12" O.C.	
gt	5	<i>Gillenia trifoliata</i>	Bowman's Root	1 gal.	24" O.C.	
jpn	9	<i>Juniperus procumbens</i> 'Nana'	Garden Juniper	1 gal.	as shown	
lcp	4	<i>Lonicera sempervirens</i> 'John Clayton'	John Clayton Trumpet Honeysuckle	1 gal.	as shown	
lak	36	<i>Liatris spatata</i> 'Kobold'	Kobold Blazing Star	1 gal.	as shown	Stage last, as shown
pp	32	<i>Packera pauciflora</i>	Balsam Ragwort	plug	12" O.C.	
pq	5	<i>Parthenocissus quinquefolia</i>	Virginia Creeper	1 gal.	as shown	
seef	14	<i>Symphoricarpos</i> 'Snow Flurry'	White Heath Aster	1 gal.	24" O.C.	
st	28	<i>Solidago rugosa</i> 'Fireworks'	Fireworks Goldenrod	1 gal.	30" O.C.	
st	16	<i>Silphium laciniatum</i>	Prarie Dock	plug	as shown	Stage last, as shown



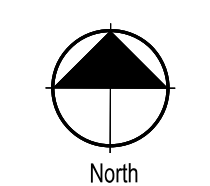
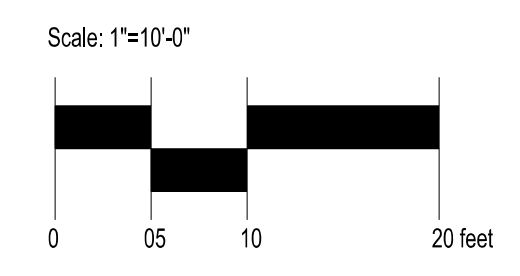
Project: **Plymouth District Library: Planting Improvements**

Date: 06/13/2024 Issued for: Bidding

Scale: 1" = 10'-0"
Drawn by: KT & SD

Title: **Planting Plan - Back of Building**

Sheet: **L-2**



BEFORE YOU DIG
CALL MISS DIG
800-482-7171
MISS DIG

CONTRACTOR is responsible to field verify location of all underground utilities prior to any work.